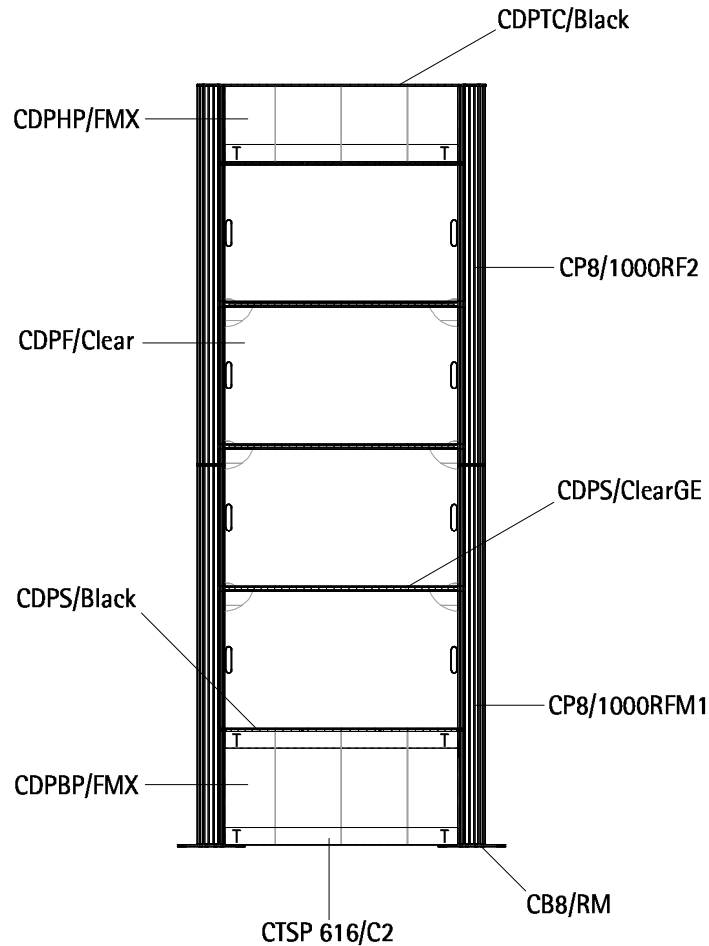
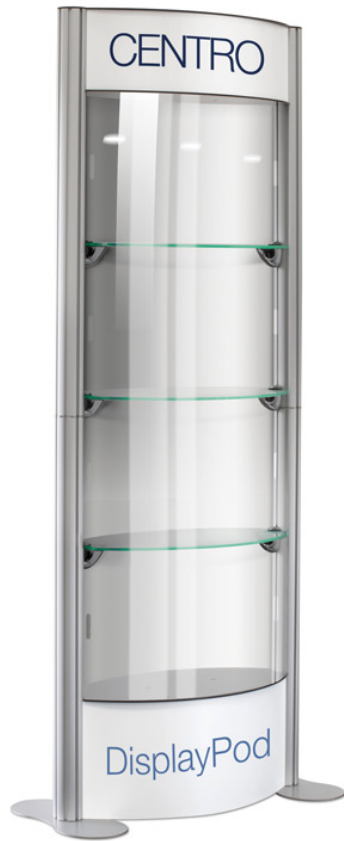


Graphic specification:

3mm thick rigid panel

- 2 panels (header promotional panel) @ 715mmW x 200mmH each (finished print/cut size)
700mmW x 200mmH each (visible graphic area)
- 2 panels (lower promotional panel) @ 715mmW x 300mmH each (finished print/cut size)
700mmW x 300mmH each (visible graphic area)



Component reference code	Component description	Quantity
CB8/RM	Centro RotrLink base plate with male fitting	2
CP8/1000RFM1	Centro RotrLink 8-way post - 1000mm with female and male connectors and 1x shelf bracket	2
CP8/1000RF2	Centro RotrLink 8-way post - 1000mm with female connector and 2x shelf brackets	2
CTSP 616/C2	Straight T-Loc profile - 616mm (single steel strip)	3
CDPS/Black	Display Pod shelf/soffit - 5mm thick black acrylic + 2 screws	2
CDPTC/Black	Display Pod top cover - 5mm thick black acrylic + 4 screws	1
CDPS/ClearGE	Display Pod green edge laser cut shelf - 8mm thick acrylic	3
CDPHP/300FMX	Display Pod header panel - 3mm thick foamex	2
CDPBP/FMX	Display Pod base panel - 3mm thick foamex	2
CDPF/Clear	Display Pod infill fascia - 2mm thick clear polycarbonate	8
CSCH6	Screwdriver cross-head 6 x 100mm	1
CTC1	Moulded wheeled trolley case with graphics tube	2

KIT REFERENCE:

CRTS/62/Black

DRAWN BY:

A.Pearson

DESCRIPTION:

Centro RotrLink Display Pod Kit

DATE:

2019

SCALE:

1:20